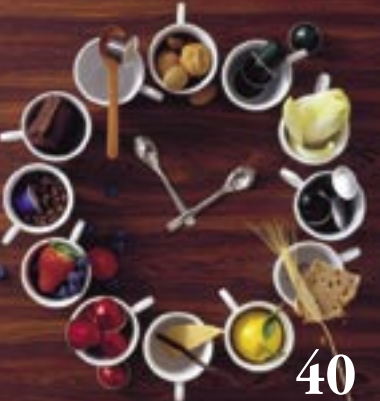


NEO
The New Essenza Colours,
the Nespresso Siemens by
Porsche Design and the
Nespresso Gemini



08



COFFEE CULTURE
Nespresso à la Carte:
A Guide to the Grands Crus

40



26

PLEASURE GUIDE
Water Codex: the Wonderful
World of Water



TRAVEL & MORE
Take a Trip to Brazil's
Coffee Treasures

30

ALINGHI & AMERICA'S CUP
All About the Carbon Race
and the New Limited Edition
Nespresso Machines



62

18

ENTRE NOUS
George Clooney is in his
prime and on a roll –
as award-winning and
outspoken actor, director,
writer and producer.
A candid conversation
on life and film with
Hollywood's conscience.

Neo

08 neo **NEW AT NESPRESSO**
Introducing the new Essenza Colours, the sleek Nespresso Siemens Porsche Design collaboration and the Nespresso Gemini Generation for the business sector.



Pleasure & People

14 solo **MOVERS AND SHAKERS**
5 Questions, 20 Answers.

18 entre nous **GEORGE CLOONEY**
Hollywood's most outspoken star talks with Elisabeth Sereda on the art of good film and good living.

26 pleasure guide **WATER CODEX**
An introduction to the intricacies of an essential aspect of life ... and coffee.

30 travel&more **SWEET YELLOW HARVEST**
Visit the heights of this year's Limited Edition heartland: Brazil.

36 city stop **CRÈME DE LA CREMA**
Take a coffee break at these metropolitan glamour cafés around the world.



Great Moment

38 great moment **PRESIDENT OF SAVOIR-VIVRE**
Régis Bulot of Relais & Châteaux at home in the best of company.

40 coffee culture **NESPRESSO À LA CARTE**
N Magazine's essential guide to the Grands Crus.

44 food **SAMBA NOUVELLE CUISINE**
Claude Troisgros adds Brazilian zest to his family's culinary culture.

50 legends **OFF SCREEN, ON COFFEE**
Past celebrities at their favourite cafés.



N Style

52 lifestyle **BARCELONA WEEKEND**
Indulge in a style-infused getaway at Barcelona's Hotel Arts.

58 superior design **DESIGN CUP**
Exquisite design that delivers excellent taste. Straight to the lips.

62 motion **CARBON CHAMPION**
Technical prowess and impeccable materials make an America's Cup Yacht.

66 design tour **CUBE X 4**
Variations on a timeless form for your home.

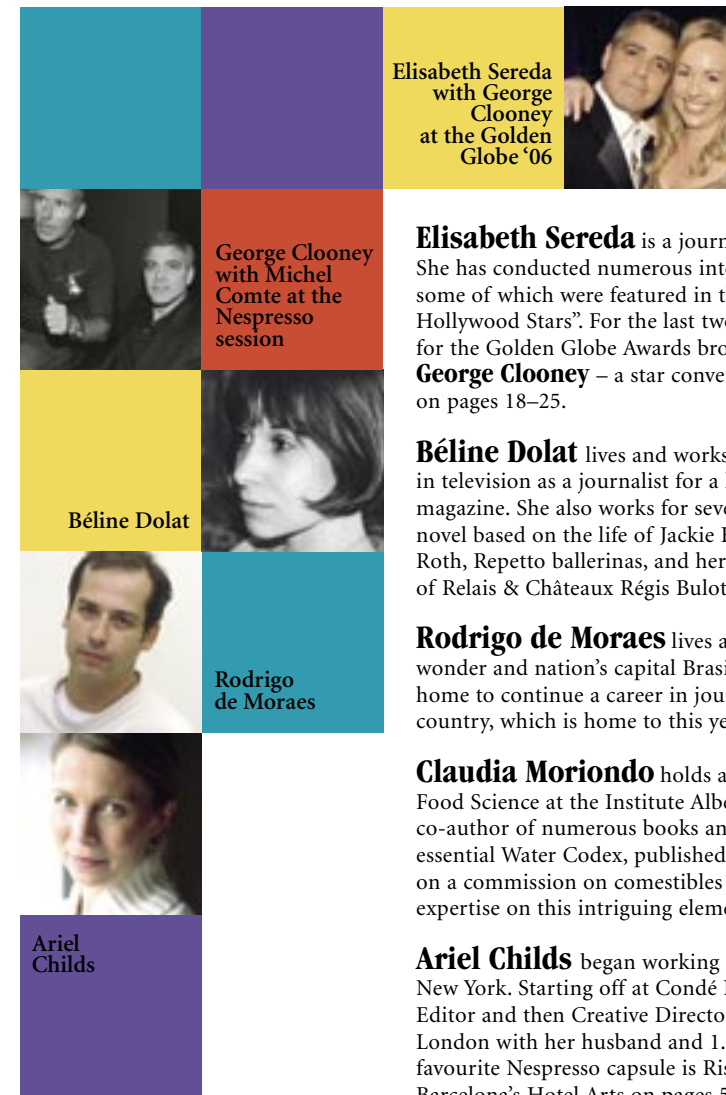
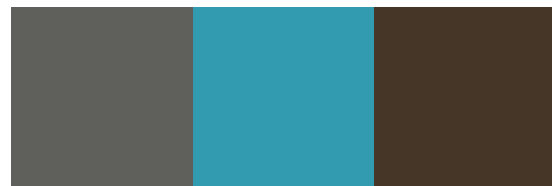


N Inside

68 inside **NESPRESSO DESIGN CONTEST**
A renowned jury mentors the newest generation of coffee visionaries.

74 inside **QUESTIONS & ANSWERS**
Nespresso gives you direct answers to all your important questions.

76 service **MAIL ORDER ACCESSORIES & ADDRESSES**



Elisabeth Sereda with George Clooney at the Golden Globe '06

George Clooney with Michel Comte at the Nespresso session

Béline Dolat

Rodrigo de Moraes

Ariel Childs

Elisabeth Sereda is a journalist and multilinguist living between Hollywood and Vienna. She has conducted numerous interviews for print and broadcast media with silver screen celebrities, some of which were featured in the 1999 release of her book "Starportrait: Interviews with 15 Hollywood Stars". For the last two years she has also been the co-producer and talent coordinator for the Golden Globe Awards broadcast. Take a peek into her tête-à-tête with Nespresso Ambassador **George Clooney** – a star conversation perfectly captured by star photographer **Michel Comte** on pages 18–25.

Béline Dolat lives and works in Paris. After a brief time at the French Senate and some years in television as a journalist for a literary programme she is presently co-editor in chief of a lifestyle magazine. She also works for several women's magazines and is currently writing a biographical novel based on the life of Jackie Kennedy. She loves Paris, macarons Ladorée, the novels of Philip Roth, Repetto ballerinas, and her morning coffee and croissant. Share her moment with the patron of Relais & Châteaux Régis Bulot on pages 38-39.

Rodrigo de Moraes lives and works in Campinas, São Paulo, Brazil. Born in the architectural wonder and nation's capital Brasilia, he worked as a teacher in the United States before returning home to continue a career in journalism and translation. He gives us an insider's look at his native country, which is home to this year's Limited Edition on pages 30-35.

Claudia Moriondo holds a doctorate in Food Science and is Professor for Nutritional and Food Science at the Institute Alberghiero and the Catholic University in Milan. She is the author and co-author of numerous books and articles on nutrition, tasting, food and beverages including the essential Water Codex, published by Sanpellegrino and Aqua Panna in 2005. In addition, she serves on a commission on comestibles for the European Union in Brussels. Moriondo offers up her expertise on this intriguing element of life and livelihood on pages 26-29.

Ariel Childs began working in the magazine world after studying photography in her native New York. Starting off at Condé Nast Publications she moved to London where she was Photography Editor and then Creative Director for Wallpaper* and Spruce magazines. She currently lives in London with her husband and 1.5 year-old daughter, and works as a freelance art director. Her favourite Nespresso capsule is Ristretto. Her art direction elan can be seen in the Lifestyle feature on Barcelona's Hotel Arts on pages 52-57.



Publisher Nestlé Nespresso S.A. **Production** ahead media GmbH, Schlesische Straße 29–30, 10997 Berlin, Germany, Tel.: +49-30 611 3080, Fax: +49-30 611 3088, E-mail: ahead.berlin@aheadmedia.com, Vienna office: Ahead Mediaberatung, Engerthstraße 151/Top 1.3, 1020 Vienna, Austria, Tel.: +43-1 214 0601, Fax: +43-1 214 06 0111, London office: Ahead Media, Elme House, 133 Long Acre, Covent Garden, London WC2E 9DT, UK, Tel.: +44-20 7917 6820, Fax +44-20 7439 0262, Rome office: Rosa-Maria Aprea, Via Lucrino 26, 0199 Rome, Italy, Tel./Fax: +39-06 8621 0518. E-mail: ahead@aheadmedia.com. **Homepage** www.nespresso.com **Nestlé Nespresso S.A. Project Manager** H.-Joachim Richter **Editor-In-Chief** Desirée Treichl-Stürgkh **Creative Director** Alexander Geringer **Executive Editor** Alisa Anh **Supervisor** Tom Wallmann **Desktop** Carita Najewitz, Agnes Przybylski **Post-Production** Bernd Weiss **Scanner-Operator** Hannes Weiss **Contributors** Ariel Childs, Béline Dolat, Matthias Flödl, Rodrigo de Moraes, Claudia Moriondo, Sandra Piske, Tina Preschitz, Elisabeth Sereda **Photographers** Lorenzo Barassi, Michel Comte, Martin Mai, Martien Mulder, Flaminia Pelazzi, Alex Rivera, Philip Sindén, Fabien Tjouw, Guilherme Young **Translation** Concorde Group, Peter Hiess, Laurence Lebourdais, Ric Maréchal, TraDoc S.A. **Directors** Alexander Geringer, Thomas Machhörndl, Gabriele Takats **Administration** Walter Schupfer, New York **Advertising Sales Managers** Rosa-Maria Aprea, Marc von Brixen, Angelika Müller, Barbara Schlager, Alexander Wuelz

© Copyright 2006 Nestlé Nespresso S.A. All rights reserved. Nespresso, the names of various Nespresso coffee varieties and the Nespresso logos mentioned in the Nespresso Magazine are trademarks of Société des Produits Nestlé S.A. that may be registered in certain countries.