

NEW AT NESPRESSO

Nespresso Essenza Automatic

ABS housing (Acrylic Butyl Styrene)
High pressure pump (19 bar)
Thermoblock heating element
Compact Brewing Unit
Programmable volume control
Functional handle allows for easy coffee preparation
Ejection of used capsule on lifting the handle
Collection container for used capsules
Back-lit control button
Removable water tank (1 l capacity)
Measurements: 16.6 x 25.2 x 29.1 cm



NEW ESSENZA



The Nespresso Essenza Automatic is available in two different models (far left and above) and four colours: Piano Black, Arctic White, Metal Grey and Titan Grey.

Not only is it beautiful on the outside; its inner values are equally impressive. Which is what makes **Nespresso's new Essenza Automatic** the perfect seasonal gift for sophisticated coffee aficionados.

The new version of the Nespresso Essenza coffee machine unites an aesthetically pleasing look and perfect taste in a compact form. Proved and tested as it is, the system has been even further perfected; it now makes even the preparation of coffee an absolute joy with even simpler handling and further improved ease of use. For it isn't merely the quality of the coffee used, the right temperature and the exact required pressure that are decisive for coffee making; it is also a matter of using precisely the right quantity of water. Only if all these requirements are met will the result be perfect coffee pleasure, complete with a smooth hazel crema and a full aroma. The new Nespresso Essenza Automatic now fully automatically calculates and adjusts the quantity of water used with a simple push of a button, depending on whether you prefer an Espresso (40 ml) or Lungo (110 ml). Incidentally, Antoine Cahen's design of the Nespresso Essenza also scores when it comes to design. It was awarded several prestigious prizes, including the renowned red dot design award in 2005. With more than 4,000 entries from over 40 countries it is one of the most important design awards worldwide and doubles as an international seal of approval for quality in design. Available in new colours, the Essenza is one gift that is guaranteed to delight its new owner as soon as it's unwrapped.

MACHINE RANGE



Nespresso D150, Classic Line.

Barista Tradition

Preparing coffee in the way that everyone knows and so many love. The capsule is inserted in the reliable capsule holder in no time at all. The compact shape impresses users and beholders alike with the sterling look of the major operating elements such as the traditional capsule holder, the steam nozzle for the milk foam and of course the cup-warming plate. The technology behind it all is concealed within the black casing. The details such as the integrated cup-warming plate are extremely functional. Due to its manageable size space can easily be found for this model, which can also be simply placed in the dining room to allow guests to prepare their Espresso or Lungo themselves in the classic way following a few simple steps.

Technical Specifications: Black and stainless steel with ABS finish (Acrylic Butyl Styrene), high pressure pump (19 bar), thermoblock heating element, manual volume control, removable steam nozzle for hot water and steam functions, cup warming plate, removable water tank (1.2 l capacity), measurements: 20 x 28.5 x 28.5 cm



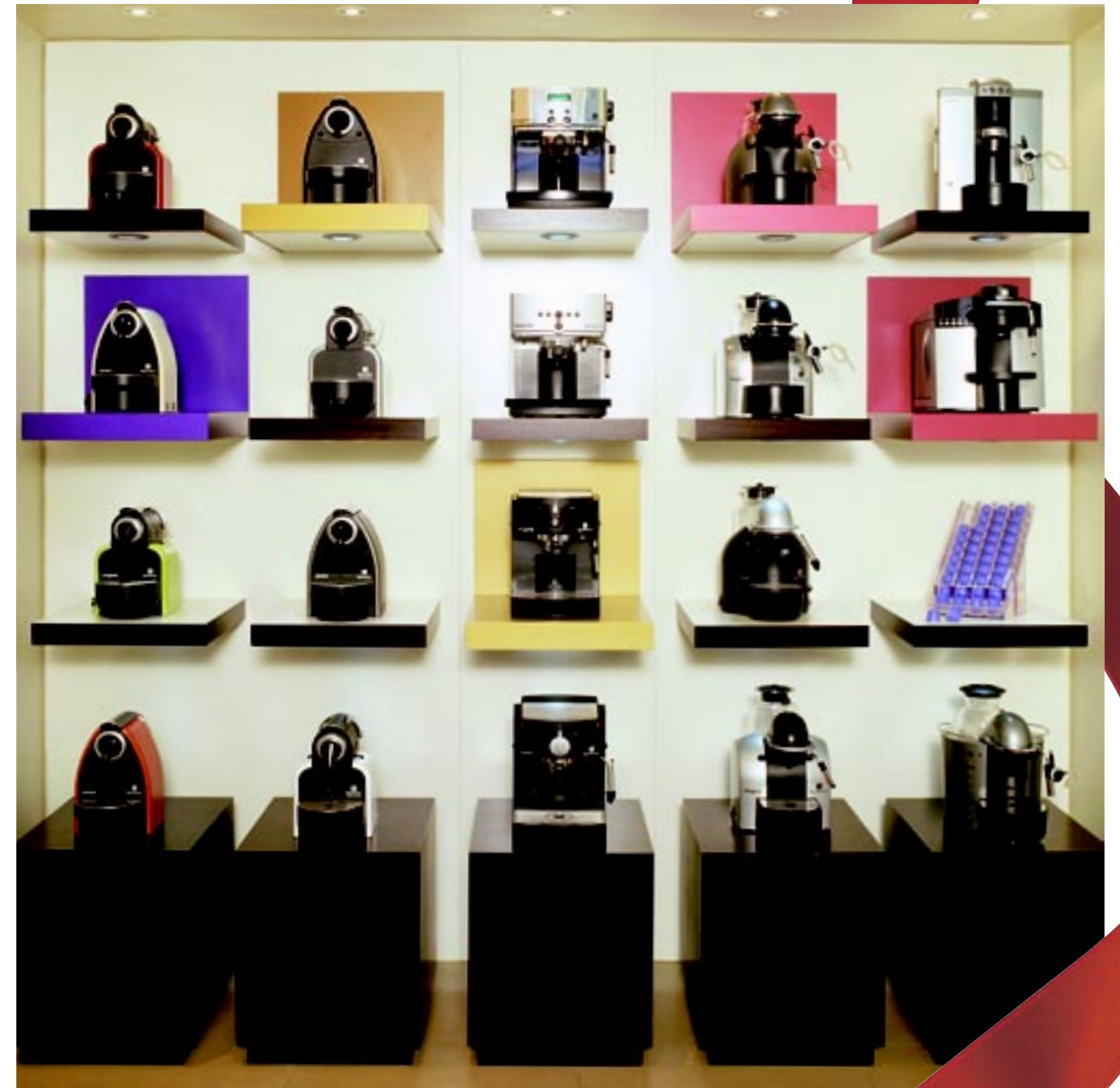
Technical Specifications: High pressure pump (19 bar), thermoblock heating system, programmable water measurement, used capsules receptacle, full capsule container indicator, electronic control of water level in tank, automatic cooling of steam nozzle, automatic insertion and ejection of capsules, multilingual display of functions, cup warming-plate for 5 Espresso cups, removable steam nozzle for hot water and steam, specific steam nozzle for Cappuccino/Caffe Latte, integrated descaling programme, back-lit buttons, polished aluminium and ABS housing, removable water tank (1.2 l capacity), measurements: 27 x 37 x 34 cm

High-Tech Master

A machine that beautifully brings together a clear and simple design and state-of-the-art technology thus guaranteeing perfect coffee pleasure. The eye-catcher is the small "balcony" upon which the coffee capsule is placed for the preparation. Everything else, such as the capsule insertion and ejection, happens automatically, just like a CD player, at the simple pressing of a button. The silver grey polished aluminium front elegantly conceals the sophisticated technology responsible for this ease of use. The special foaming device allows users to choose between milk foam for Cappuccino and hot milk for Caffe Latte. In short, a coffee machine that serves as an eye-catcher even in a professionally equipped stainless steel kitchen.



Nespresso Siemens SN70 Romeo, Top Line.



The preparation of a cup of Nespresso is one of the rituals of modern day coffee culture; even as the appropriate grand cru is being chosen, the senses are being stimulated in a stylish manner. Depending on what takes your fancy at any given time, there's a variety of choice to suit every particular moment. The simple insertion of the capsule into the machine is an important characteristic of the Nespresso system. The first drop of the perfect crema is the crowning glory that lets you savour the perfect drinking pleasure that Nespresso guarantees. Each of the machines developed and created by Nespresso affords a unique design, an entirely novel technology and serviceable functions. Never before has it been quite as simple or stylish to arrive at a perfect cup of coffee as it is now with Nespresso's machines. You have the choice and it is your taste that determines it.

MACHINE RANGE



Nespresso D290, Concept Line.

All-round Talent

With its striking appearance this machine looks particularly fetching in a kitchen, but also in a living or dining room where it doubles as an attractive design object that immediately identifies its owner as a coffee aficionado with superior taste. The extravagantly designed details such as the attached water container or the metal bar are not only beautiful but also highly functional, leaving no wish unfulfilled as far as the coffee preparation is concerned. The water quantity can be programmed, Espresso or Lungo are made at the push of a button. The used capsules are automatically collected in a container that is invisible from the outside. And the special two-stage milk foaming device helps to prepare either perfect Cappuccino foam or hot milk for Caffe Latte.

Technical Specifications: Metallic grey ABS housing, high pressure pump (19 bar), thermoblock heating element, programmable volume control, back-lit controls, removable steam nozzle for hot water and steam functions, specific steam nozzle for Cappuccino/Caffe Latte, ejection of used capsule on opening the jaw device, collection container for used capsules, inbuilt warning sound that indicates when the collection container is full, removable water tank (1.2 l capacity), measurements: 22 x 35,5 x 31 cm



Nespresso Essenza D90R, Compact Line.

Compact Mobility

This is undoubtedly the pop star among coffee machines. It boasts a compact design whose trademarks are a striking handle, an unmistakable spout and a choice of distinctive colours. Designed along the principle of “form follows function”, this model is reduced to the essentials and takes up but little space in order to display its true grandeur – the preparation of singularly delicious coffee. Not only is its design beautiful to behold, but it is also ergonomically sound and instantly reveals how the machine works. The dynamically curved metal bar serves to insert the capsule in the specially constructed compact brewing unit and ejects used capsules into a collection container. It makes a perfect gift and is just as handy in your holiday house or on your travels.

Technical Specifications: ABS housing, high pressure pump (19 bar), thermoblock heating element, manual volume control, functional handle allows for easy coffee preparation, ejection of used capsule on lifting the handle, collection container for used capsules, back-lit control button, removable water tank (1 l capacity), measurements: 16,6 x 25,2 x 29,1 cm



Indulge in gourmet pleasures with the new Aeroccino – delicious milk froth at the touch of a button. Bringing you the kind of quality coffee delights that used to require employing real Barista talents at home, the Aeroccino from Nespresso is a new, automatic and amazingly simple way of creating light, creamy milk froth. Simply pour in some cold, fresh milk, press the button and delight in the perfect results every time. Compact and quiet, the Aeroccino quickly produces an exceptional quality milk froth, which you can enjoy in several coffee recipes. If you're after that milky favourite, a Caffe Latte, the Aeroccino can also be used to only heat milk with a little froth. Exclusively available from the Nespresso Club, you can find out how to order your own Aeroccino on page 76.